

January
2008



Wye Marsh Newsletter

Celebrate World Wetlands Day Saturday, February 2nd

“Healthy Wetlands, Healthy People” is the theme for this year and we plan to usher this important day in with a myriad of activities and events such as two “Wetland Creatures Shows and Guided Walks”, “What is a wetland for?” interactive family activities”, along with displays and exhibits.

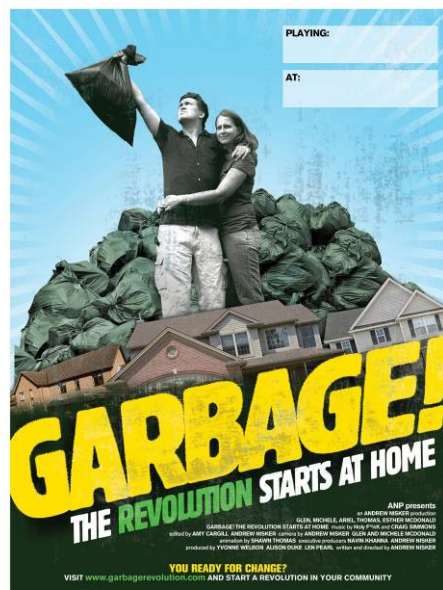
HIGHLIGHT TO THE DAY

Wye Marsh has teamed up with Twisted Pines Music & Arts Festival to kick-off the NEW monthly environmental movie series on this significant day with “**Garbage**”. Andrew Nisker the filmmaker himself will be here to introduce the morning and afternoon screenings. He will also be available for a question and answer session following the afternoon viewing.

Stay posted for upcoming dates and films.



Additional information can be found out about this movie by visiting www.twistedpines.com



Inside this issue:

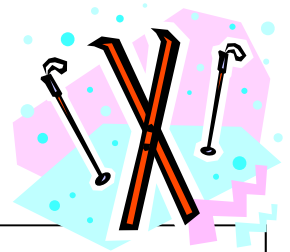
What's Happening at Wye Marsh	2
Doggie Days Continues	3
Wye Marsh Monthly Donor Program	3
Saw-whet Owl Banding	4
Scouting & Guiding Ski & Snowshoe Days	4
Winter Snowshoe Ecotours Have Begun	5
Upcoming Events, Wish List	5

Free Cross Country Ski Lessons

Every Saturday and Sunday at 10:00am and 1:00 pm with the purchase of a day trail pass or become an annual member and enjoy one of the many benefits included.



What's Happening This Winter



Open House and Membership Day Sunday, January 20th

Join us for a FREE day at Wye Marsh and experience first hand what we have to offer. There will be live animal shows, cross country ski lessons, a guided snowshoe tour, and much more. Purchase a membership that day and receive a free ballot towards a Winter Snowshoe Ecotour for Two draw taking place at the end of the day. The purpose of this special day is to introduce the community to Wye Marsh membership. Becoming a member of Wye Marsh gives you a variety of opportunities to learn more about the environment surrounding us and how to enjoy and protect It also gives you an occasion to meet like-minded people through social activities and programs, in-house clubs, fundraising events and annual general meetings. Rentals of cross country ski packages and snowshoes are available for nominal cost.



**“Invest in your children’s future
and support Wye Marsh”**

New Years Family Fun Day

Come one, come all to our Family Fun Day at Wye Marsh on New Years Day. Start a new tradition with your family and friends and exercise your mind and body. Bring the family for a day of entertainment and activities to welcome in the New Year. Included activities are:

- 10:00am Snowshoe tour lead by our energetic guides
- 11:30am Great Snowshoe Challenge Race and Obstacle Course for all ages
- 11:30 am to 1:00 pm Free Hotdogs and Hot Chocolate
- 1:00 pm Meet the Creatures “Birds of Prey”
- 2:30 pm Wet N Scaly Show

So come out and join us Tuesday, January 1st for a fun filled family day.

Time: 10:00am to 3:30pm

Cost: General Admission \$10.00 for adults
\$6.50 for seniors and children
(includes one hot dog and hot chocolate per person with paid admission)

Bring your own or cross country ski packages and snowshoes available to rent for a nominal fee

* Please note events are weather dependent and lunch is limited based on attendance

Moonlight Skis

Friday, January 18th & Saturday, January 19th
(Pre-registration is appreciated)

The Wye Marsh invites you to celebrate each full moon with a very special late night ski. Come out, meet new friends and enjoy a peaceful ski on our groomed trails while watching the stars and admiring the marsh by the light of the full moon!



Cost: \$5 for members and \$8 for non-members

Time: 7 to 9pm

Free Cross Country Ski Lessons and Meet The Creatures Shows

December 26th until January 6th
included with purchase of general admission

During the holidays get active and learn how to cross country ski on us. With the purchase of a day pass or if you are a Wye Marsh member partake in a free lesson for yourself or your entire family. Rentals available for a nominal fee.

Doggie Days Continue

Many enjoyed our first Doggie Days Walk and Social which will take place again on Sunday, January 6th at 1:00pm.

Special thanks to Eden Beardsall and Anna Scott-Morrison who aided our naturalist in managing last months program and the activities. These ladies run Ebenzer Kennels and belong to the Midland and District Kennel Club as well as the Georgian Bay Hunting Retriever Club.



K-9 friends are always welcome at the Wye Marsh. We want you and your poochy pals to join us for a doggie social! A Wye Marsh naturalist will lead you and your companion on a one hour guided walk throughout the magnificent Wye Marsh interpreting our many points of interest along the way. After a look around the Marsh, it is play time for your pal. A Wye Marsh naturalist will lead a variety of doggie games which are geared at burning off some energy and creating a social atmosphere for your pup. This is a great way to exercise both you and your dog, while meeting other dog owners from the area. Please note: Proper doggie etiquette is required. Dogs must be on leashes during the guided walk.

Cost: Included with general admission and free to all Wye Marsh members

Become a Wye Marsh Monthly Donor

- Easy to use: sign up and your gift continues to work month to month, for a full year
- Giving smaller gifts of \$10, \$15, \$20 or more a month is a simple and affordable way to make a significant donation.
- Make payments through your charge card, with post dated cheques or online
- Your gift is tax deductible – you will receive a tax receipt at the end of the year
- Environmentally friendly – less paper is used through pre-authorized payments
- Cost effective – saves time, reduces administration and postage costs
- Flexible – you can increase, decrease, pause or stop your donation at any time – simply contact us
- Rewarding – you will receive newsletters from Wye Marsh with updates of how your donation is making a difference!

As a monthly donor, you help Wye Marsh with your continued support through out the year.

Become a Wye Marsh supporter for as little as \$10. a month! You will receive a token of appreciation, your choice: a Wye Marsh Pin or Crest.

For more information contact: Karin Hargreaves-Massar at (705) 526-7809, ext. 205.

Saw –whet Owl Banding

On the evenings of September 29th and 30th, Garth Baker, a licensed bird bander, was invited to Wye Marsh to band Saw-whet Owls. Using appropriate netting we were able to band and release 10 Saw-whet Owls.

Netting was set up close to the two open fields directly south of the Wye Marsh Centre parking lot. Those in attendance were able to join Garth each time he checked his nets. Only two or three people went at a time so that any captured birds would not be startled. Observers were able to understand the processes and reasons behind bird banding.

Bird banding is one of the most useful tools in the study of wild birds. Wild birds are captured and marked, with a numbered metal band placed on the leg. The bander records information about the bird, as well as where and when it was banded. The size and design of bird bands vary according to the species being studied. The band must be large enough that it does not constrict the bird's leg, yet small enough that it will not slip off or hinder the bird's activities. The band is applied by carefully squeezing it closed around the lower part of the leg with a pair of pliers. The band is inscribed with a message such as "Call 1-800-327-BAND" or "Write Bird Band Laurel, MD 20708 USA," plus a unique eight- or nine-digit number. If you find a bird band, it is important to gather all the information you can about the bird and return the band, with the information, to the Canadian Bird Banding Office, Canadian Wildlife Service, Ottawa, Ontario K1A 0H3. If the banded bird is alive, do not remove the band; record all the information that you can and release the bird. On receipt of your recovery report, the Bird Banding Office will send you a Certificate of Appreciation, telling you where the bird was banded, by whom, and what kind of bird it was. The bander will be told where and when you found the band.

In Canada, about 10 percent of bands applied to game birds and less than one percent of those applied to non-game species are recovered.

Data from recovered bands provide information on the distribution and movement of species, their relative numbers, annual production, life span, and causes of death. Such information increases our knowledge and understanding of birds and their habits and helps us to manage and conserve them.

The bander must identify the bird by species as well as by age and sex before applying the band. About 645 species of birds breed north of Mexico on this continent and most are easily recognized with some practice. Identification of a bird's age and sex is usually more difficult, however. Various criteria are used depending on the species and time of year.

Wye Marsh was happy to be a part of these two evenings and we thank Garth for enlightening us and our guests on the specifics and importance of bird banding in North America. We would be happy to have Garth return to the Wye Marsh any time as we believe this is an important monitoring project that can help others understand the importance of conservation.

With information from: Hinterlands who's who. *Bird Banding in Canada*. Retrieved on December 20, 2007 from <http://www.hww.ca/hww2.asp?id=223>

Attention All Scouting and Guiding Groups

Cross-County Skiing and Snowshoeing Adventure Days 2008

(Includes Beavers to Rovers & Sparks to Senior Branches)

Saturday, January 26th & Sunday, January 27th

Saturday, March 1st & Sunday, March 2nd

Wye Marsh is offering a great opportunity for every Scouting and Guiding unit to participate in Snowshoeing and X-County Skiing activities that can complete or go towards completing their badges!

Winter Snowshoe Ecotours Have Begun

The Wye Marsh is proud to bring you our most exciting new program and a unique opportunity to explore winter at the marsh –**WINTER ECOTOURS**. This is your chance to go behind the scenes into the world of woodland and wetland research by getting into the thick of things during the winter months. One of our qualified and knowledgeable naturalist guides will lead you on a three hour snowshoe experience that will take you deep into the wooded areas of the 3600 acre Wye Marsh.

Every Thursday, Saturday, and Sunday from 10:00am to 1:00pm



**Please call for your
reservations (705) 526-7809
Ext. 207**

**Makes a unique gift for that
nature lover!**

Gift Certificates are available



Upcoming Events

Hare's Hop Snowshoe Race

Neither hide nor hare will stop this exciting and entertaining 4 kilometre race from happening at Wye Marsh. The Hare's Hop Snowshoe Race will include both men's and women's divisions and the top three racers receive awards. The excitement is building for this fast paced and unique event!

Date: Saturday, February 9th **Registration:** 9:00am with a start time of 10:00am

Cost: \$30 per person

PLEASE PRE-REGISTER BY CALLING US AT 526-7809



Dog Sled Tours Return

Join the Windrift Kennels mushers for a new way to visit Wye Marsh. You will meet the dogs, join the team, and prepare for the greatest winter adventure of the season. Hop in the sled and a team of dogs provides you a 10 to 15 minute tour experience! Experience a rarity in this area.

Date: Saturday, February 23rd **Cost:** \$20 per person includes general admission for the day

Valentine's Day Proposal in The Marsh, A Natural Alternative

Wye Marsh Wish List

Wye Marsh is currently in need of:

- + Used sports equipment
- + Wood splitter
- + Hardware (nails, screws, etc.)
- + Costumes
- + Wood for construction—minimum 12" in length
- + Energy Efficient, Newer Model Fridge
- + Plastic hockey sticks, nets, helmets and goalie equipment
- + 3-Prong extension cords
- + Small wire animal cage (hamster or guinea pig size)

In-kind receipts for value of articles available.