

ISSUE 66
SPRING 2025

Thank you for your interest in the Wye Marsh Wildlife Centre. Our Seasonal newsletter, "Marsh Matters," will keep you up-to-date on what is happening at Wye Marsh!

Earth Day
April 19th, 2025



Spring has sprung at the marsh! Check out our upcoming events!



Meet Marley...
and more!

SAVE THE DATE!
MARCH 22 & 23, 2025




**SWEETWATER
HARVEST FESTIVAL**

March 22 & 23 | 9 am - 5 pm
LAST ADMISSION AT 2:30 PM

Wye Marsh is open daily at 9:00AM. Our Trail Systems close at 4:00PM and the Visitor Centre at 5:00PM.

 16160 Highway 12 East, Midland, ON L4R 1K6

 705-526-7809

 info@wyemarsh.com

 wyemarsh.com

 [wyemarshwildlifecentre](https://www.facebook.com/wyemarshwildlifecentre)

 [wyemarsh](https://www.instagram.com/wyemarsh)



A MESSAGE FROM the President of the Board of Directors

“Spring is sprung, the grass is riz, I wonder where the birdies is. They say the birdies on the wing, but that’s absurd, I always thought the wing was on the bird.” (Anonymous)

Yes everyone, spring has sprung. And oh my, what a most interesting winter we have had. More snow than quite a while, and temperatures floating up and down. But we have made it through.

And we all know where the ‘birdies is”, right here at Wye Marsh. Come visit our birds of prey in their glorious new home once it is open. (Monitor our Facebook page for the opening date.) And come and enjoy the returning migratory birds over the next few months, as well as enjoying the Trumpeter Swans, ducks and geese all hanging around Swan Landing.

All around us we will be able to watch nature wake up, and begin to bloom and flower and shake off the snow and cold.

As we all know, Mother Nature can keep a few tricks up her sleeve, including snow and cold going into March, but hopefully she stops there. We are all looking forward to seeing more sun and some warm weather.

There are so many exciting events planned to enjoy here at the marsh. Spring Break Camp runs from March 10th to 14th, the always wonderful and enjoyable Sweetwater Harvest Festival on March 22nd and 23rd. Check our website and join in the fun of making turtle nest protectors, or join Craig Pezik helping with invasive species removal in May and June.

For the budding artists consider signing up for the Stained Glass Dragonfly Workshop being held on May 9th, and our ABCs of Nature Journling on May 25th.

We are all looking forward to the return of canoe or kayak voyages through the wetlands. Keep an eye on the bulletin board inside the Visitor Centre and the postings on our website for all of the events available for you to enjoy.

I wish to send out a big thank you to our members for your continued support. Your attending for walks, programs and your thoughts and ideas help us to offer programs and workshops of interest to a wide audience.

A very important date for our members to remember is April 12, 2025, when we are holding the Annual General Meeting at 9:30 am. Non-members are also welcome to attend.

I cannot forget the hard work and dedication of our volunteers. Thank you all for your unwavering support.

And a very big thank you to the Wye Marsh staff. Your dedication to the marsh does not go unnoticed!

Rick Brady,
President, Friends of Wye Marsh



Wye Marsh Welcomes

Eric Walter **Executive Director**

Hello members, friends, enthusiasts, and everyone else who for one reason or another feels somehow connected with the Wye Marsh and all that it has to offer.

To start, I'd like to let you know how excited I am to be joining the team here at the Friends of Wye Marsh, and how optimistic I am about the opportunities that are hidden among the thousands of acres of wilderness that make up this very special area. The marsh holds such a special place in the hearts of many locals and visitors alike and this next chapter for me is one I am very much looking forward to.

Today, our hallways and our trails continue to be quiet. It has been a long and enduring winter, and the marsh is sleepy. The slow trickle of visitors each day are treated to kilometers of trails almost to themselves. There is a quiet calm that is broken up only by the periodic encounter with birds and other wildlife who are curious and excited to engage. There is a peaceful magic that comes with being at the marsh in the winter. But soon the Marsh will wake up. The snow will melt. Many of the birds will return from their winter away. The maple sap will begin flowing for all to enjoy at our upcoming Sweetwater Harvest Festival. And all these acres of wilderness area will come to life with the colour and sounds of spring, and all of the excitement of the people here to enjoy it. I'm looking forward to experiencing that excitement this year from a new perspective.

For you, the people who follow along each month by reading our newsletter, I am grateful to have you here to experience the marsh in your own way. Whether you are a member, a volunteer, an occasional visitor, conservationist, donor, or all of the above, thank you for being part of what makes the Wye Marsh such a special place. I am excited to have you with us.

All the best,

Eric





VOLUNTEERS WANTED

Share your love of nature with kindred spirits as a Wye Marsh volunteer, and invite a friend to join you on our incredible team!

Apply now to have fun this Spring and Summer. Explore the possibilities with our: Community Outreach Team, Wildflower Gardeners, Hike Assistants, Trail Ambassadors, Wildlife Monitors, Habitat Restoration Team, Canoeists, Front Desk and Special Events Volunteers. Plus high school students can earn community service hours as a Summer Camp Counselor-in Training.

For more information please visit www.wyemarsh.com/volunteer

Call 705-526-7809 ext 217 or email hkeery@wyemarsh.com

See you soon!



MEET MARLEY

Rough-legged Hawk

AGE: 4

Marley is missing his right wing; we believe he was struck by a wind turbine while in flight.

Although wind turbines are a great source of renewable energy, they are estimated to be responsible for the deaths of hundreds of thousands of birds and bats annually! To reduce fatalities, areas with a high number of flighted wildlife should be avoided for turbine placement.

While Marley cannot fly, he enjoys exercising by walking and jumping and has developed a close relationship of trust with his handlers. Right now, he is being taught to go into a transport crate on command.

Marley is available for adoption!



WYE MARSH ANNUAL GENERAL MEETING

APRIL 12, 2025

Hear Ye! Hear Ye! All Members of Friends of Wye Marsh are cordially invited to the organization's Annual General Meeting, which is set to take place:

Saturday, April 12, 2025

9:30 am - 12 noon

**Wye Marsh Wildlife Centre
16160 Highway 12 E, Midland, ON**

Please RSVP by April 4. Call: 705-526-7809 ext 217
or email hkeery@wyemarsh.com

For more information please visit:
www.wyemarsh.com/AGM

EARTH DAY

FREE ADMISSION!

Saturday April 19th, 2025 | 9:00am - 3pm

9-10:30 am Wye River Clean Up.... Meet at Sainte-Marie Park

9-11 am Glossy Buckthorn Removal... Meet at the back door

11 am-12 pm Rubber Boot Hike... Meet at the back door.
Explore our National Wildlife Area with us.

1- 1:30 pm Wet'N Scaly... Display Hall

1:30 - 2 pm Turtle Tally... Classroom. Join this Citizen Science project at Wye Marsh

2 - 3 pm Build a Turtle Nest Protector for Wye Marsh...
Meet in the Classroom

9 am - 3 pm Visit our Special Guests in the Display Hall!



www.wyemarsh.com/earthday

SUMMER CAMP!

\$245 Annual Family Members | \$295 Annual Joint Members | \$325 Non-Members

Day Camp: 9am - 4pm | Late Care Available

During our Summer Day Camps your child will have the opportunity to learn about reptiles, amphibians, and birds of prey through interactive live demonstrations; explore over 25km of wilderness trails; plus much, much more!

Registration Opens March 18th, 2025 at 9am
www.wyemarsh.com/summer-day-camp





HABITAT RESTORATION ACTION DAYS



As pretty as some exotic plants look, they can have devastating impacts on our local environment!

Help restore wildlife habitat at Wye Marsh.

Learn how to safely remove invasive plants from the area. Join us for just two hours on any of the days listed below - and you will make a difference!

Registration preferred. Drop-ins are welcome. Please call Craig 705-526-7809 ext. 205, or email cpezik@wyemarsh.com.

If possible, please bring your gardening gloves, drinking water and bug spray.

Garlic Mustard, Dames Rocket, Spotted Knapweed and Phragmites Dates:

Saturdays from 9 - 11 am

- May 31
- June 7
- June 14
- June 21
- June 28
- July 5
- July 12
- July 19
- July 26
- August 2
- August 9
- August 16
- August 23
- August 30



Dames Rocket

Introduced to North America in the 1600s by European settlers for its use as an ornamental garden plant. Since then, its prolific seed production has allowed it to colonize a variety of natural areas such as meadows, roadsides and disturbed areas. Once it takes hold in an area, it excludes native species by forming dense monocultures.



Garlic Mustard

An edible herb native to Europe that was brought to North America in the early 1800s. Since its arrival in North America it has escaped into the wild and is now one of Ontario's most aggressive forest invaders. Garlic mustard can invade relatively undisturbed forests. Once established it can displace native wildflowers like Trilliums. It hinders other plants by interfering with the growth of fungi that bring nutrients to the roots of the plants.



Spotted Knapweed

Accidentally introduced into North America from Western, Central and Eastern Europe in the late 1800s in contaminated alfalfa clover seed and soil used for ship ballast. Before it was considered a serious weed, it was spread in domestic hay and through human activities. It is a highly competitive weed that invades disturbed areas and degrades native plant communities.



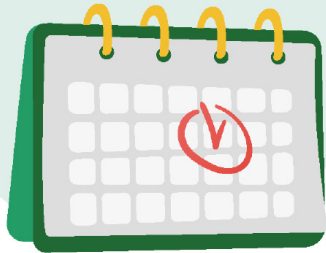
Phragmites

While native Phragmites are a natural part of our local ecosystem, the Eurasian form is not. Alien to our wetland, it grows in tall tight stands that are destroying vital turtle habitat at Wye Marsh. Help our turtles. Become a Phragmites Fighter!



DAYS TO CELEBRATE & COMMEMORATE

**MARK YOUR
CALENDARS!**



World Wildlife Day
March 3rd

World Water Day
March 22nd

Aquatic Animal Day
April 3rd

International Beaver Day
April 7th

Earth Day
April 22nd

Global Big Day
May 11th

Love a Tree Day
May 16th

Endangered Species Day
May 16th

World Bee Day
May 20th

International Day of Biology
May 22nd

World Turtle Day
May 23rd

World Otter Day
May 28th

WEEKEND PROGRAMMING STARTING MAY 17TH



GUIDED KAYAK TOURS

Join our Naturalist on a 1.5 hour guided kayak tour and discover wildlife amongst the water lilies and cattails. Must be at least 8 years of age. Please sign up upon your arrival. Admission+10+HST / person.



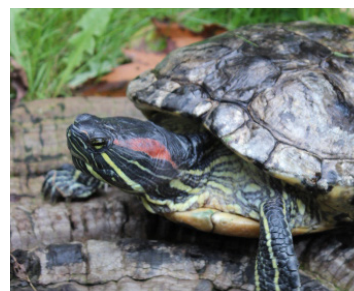
GUIDED CANOE TOURS

Join our Naturalists on a 1 hour guided voyageur-style canoe tour of the marsh channels. Tours are first come, first serve basis - no preregistration. Please sign up upon your arrival. Admission+\$8+HST/person.



MEET THE NATURALIST

Join one of our Naturalists to enjoy one of their favorite Wye Marsh activities! Meet at the Visitor Centre, tours are subject to change. Free with admission.



FEATURE CREATURE

Meet some of our Animal Ambassadors. Learn about their personalities, favourite foods, natural habitats, and much more.

PRIVATE ECOTOURS

Book a private three-hour guided tour, for a unique outdoor experience that fits your schedule and interests. Please note - some physical endurance required.

We will take you well beyond the limits of our walking trails, providing you with the best opportunity to fully explore the beauty of Wye Marsh.



SWEETWATER HARVEST FESTIVAL

March 22 & 23, 2025



Pancake Breakfast @ Restaurant Ste-Marie



- ~ Time Travel at Sainte-Marie
- ~ Try on historical costumes
- ~ Play Indigenous games
- ~ Savor some corn bread
- ~ Shop the Artisans Market

WYE MARSH

- ~ Wander through our Sugar Bush
- ~ Visit the Sugar Shack
- ~ Taste some maple taffy
- ~ Roast some Bannock
- ~ Jigg along with Basile @ Wye Marsh!

Save \$6 ~ Get Advanced Online Tickets Before March 18
 For details visit: www.wyemarsh.com/sweetwater



Our Generous Sponsors





WHAT'S HAPPENING AT THE WYE MARSH THIS SPRING



EMBRACING RISK:
THE BENEFITS OF
OUTDOOR PLAY
FOR KIDS

March 8, 2025 | 10am-12pm

Learn how to support safe, effective, outdoor adventures that let children explore and experience the glory of the natural world around us. This FREE workshop is designed for inquisitive parents, educators, childcare providers and outdoor program facilitators.

See details at: www.wyemarsh.com/outdoor-play-for-kids



March 22 - 23, 2025 | 9am-5pm

Celebrate a uniquely Canadian tradition in a distinctively Canadian landscape. Escape to a time when maple syrup was made over an open fire, experience our history and explore nature at its best.

See details at: www.wyemarsh.com/sweetwater



MAKE A TURTLE
NEST PROTECTOR

March 29, 2025 | 1:30pm - 3:30pm

Help increase turtle hatchling survival rates at Wye Marsh. Join us for this FREE two-hour workshop and you can assemble and decorate a turtle nest protector for us to use at Wye Marsh.

See details at: www.wyemarsh.com/turtle-nest-protectors



WATER TEACHING

March 30, 2025 | 10am - 12:00 Noon

This immersive experience will guide participants through spiritual, cultural, and ecological significance of water in Indigenous cultures. Whether you are seeking spiritual renewal, ecological awareness, or cultural enrichment, this workshop offers a space to reflect on water's vital role in sustaining life and community.

See details at: www.wyemarsh.com/water-teaching



WYE MARSH
ANNUAL GENERAL
MEETING

April 12, 2025 | 9:30am-12pm

The Friends of the Wye Marsh Inc. (FWM) is holding its Annual General Meeting (AGM) on Saturday, April 12th, 2025, at 9:30 a.m. at the Wye Marsh Wildlife Centre. The Wye Marsh is located at 16160 Highway 12 Midland Ontario

See details at: www.wyemarsh.com/AGM



EARTH DAY

April 19, 2025 | 9am-5pm

Join Friends of Wye Marsh for a wonderful action-packed Earth Day celebration, free workshops and family-friendly activities. Admission is FREE!

See details at: www.wyemarsh.com/earthday



WHAT'S HAPPENING AT THE WYE MARSH THIS SPRING



DESIGN YOUR
OWN POLLINATOR
FRIENDLY GARDEN

May 4, 2025 | 1:30pm-4pm

Welcome more butterflies and moths, beetles and bees, and other pollinators into your garden – by DESIGN. Join Kathleen Patnode, from the Xerces Society for Invertebrate Conservation, for this insightful FREE workshop.

See details at: www.wyemarsh.com/pollinator-garden



STAINED GLASS
DRAGONFLY
WORKSHOP

May 9, 2025 | 1pm – 4pm

Discover the world of “Bending Light” in this unique opportunity to create your own Dragonfly suncatcher. Learn how to cut, grind, foil and solder your own piece of art during this introductory 3-hour workshop with local artist, Susan Dalrymple.

See details at: www.wyemarsh.com/stained-glass-dragonfly-2



GLOBAL BIG DAY

May 10, 2025 | 9am – 5pm

Calling all Birders and Citizen Scientists! Join us at Wye Marsh ~ Saturday, May 11, 2024. Be part of an extraordinary international annual bird survey.

See details at: www.wyemarsh.com/global-big-day



ABCs OF NATURE
JOURNALING

May 25, 2025 | 1:30pm-3:30pm

Join this beginner-friendly workshop and learn how to use words, pictures, numbers, and simple observations to connect with the natural world. Nature journaling is a creative and playful way to sharpen your focus, nurture curiosity, and deepen your experiences outdoors.

See details at: www.wyemarsh.com/abc-nature-journaling



MARSH BY
MOONLIGHT
PADDLE SERIES

May 30-31 & June 6-7, 2025 | 9pm-10:30pm

Experience a guided canoe tour through the sparkling moonlit waters of the Wye Marsh. Twinkling canoes and boardwalk, night noises, some yummy bannock and lots of laughs will make for spectacular photo-ops and an unforgettable night! Connect with nature and enjoy this unique and different perspective of the marsh.

See details at: www.wyemarsh.com/Marsh-By-Moonlight-Canoe



SEDGES: WHAT THEY
REVEAL ABOUT THE
LANDSCAPE AND
WHY WE CARE

June 15, 2025 | 1:30pm-3:30pm

Anyone who has done a biological study of the land will know that sedges (grass-like plants) can reveal secrets of the soil. Although they visually blend in with other plants, sedges are beautiful in form and function. And when it comes to ‘reading the landscape’ sedges can provide you with a amazing insights.

See details at: www.wyemarsh.com/sedges



Georgian Bay Garden Tour

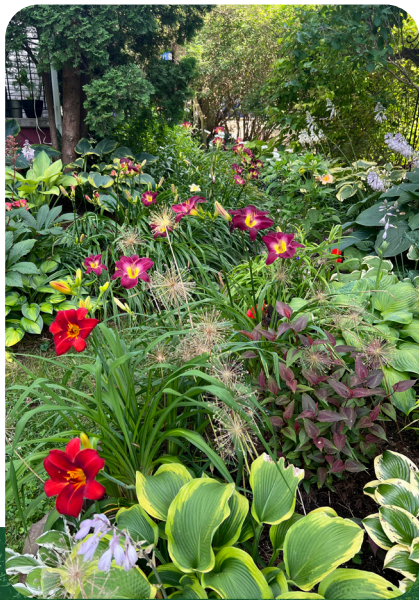


Green Thumb Alert:

Wye Marsh Joins The 2025 Georgian Bay Garden Tour!

This year's Garden Tour will be held on Saturday, July 26, 2025 from 9:00am-4:00pm. Tickets are \$25 each and the proceeds of the event will benefit Hospice Huronia - and Friends of Wye Marsh!

Treat yourself to a day exploring breathtaking gardens within the general areas of Midland, Penetanguishene, Tiny and Tay. Soak in the beauty and tranquility of nature. Chat with kindred spirits as our hosts share their gardening insights and highlight hidden treasures.



Our Wye Marsh Wildflower Garden will be one of the points of interest. A Silent Auction will take place in our Visitors Centre. (Take a sneak peak and place an early auction bid starting July 18.)

In addition, local Artisans will feature their creative wares at some of the gardens, and a green-thumb testing "Mystery Plant Competition" (with unique plant prizes!) will take place at one of the host gardens.

The Georgian Bay Garden Tour is a great way to come together with family and friends, explore our regional neighbourhoods and enjoy a beautiful summer day!



Mark your calendars and join us for this year's fabulous Georgian Bay Garden Tour.

Saturday, July 26 | 9 am - 4 pm
Tickets go on sale June 1st at Wye Marsh.

To donate an auction item, or sponsor this event, please contact: hkeery@wyemarsh.com or call Heather at 705-526-7809 ext 217

For more info visit: www.gbgardentour.com/



WYE MARSH TRAILS SYSTEM

16160 Highway 12 East, Tay, ON (705) 526-7809



LEGEND

- Hiking Trails
- Boardwalk
- Marsh March 1.9km
(Wheelchair & stroller accessible friendly)
- Hardwood & Return Trail 0.4 km
- Muskrat Loop 1.6 km
- Woodland Trail 1.5 km
- I.D. Trails 0.9 km
- Snowshoe Trails
- Service Road

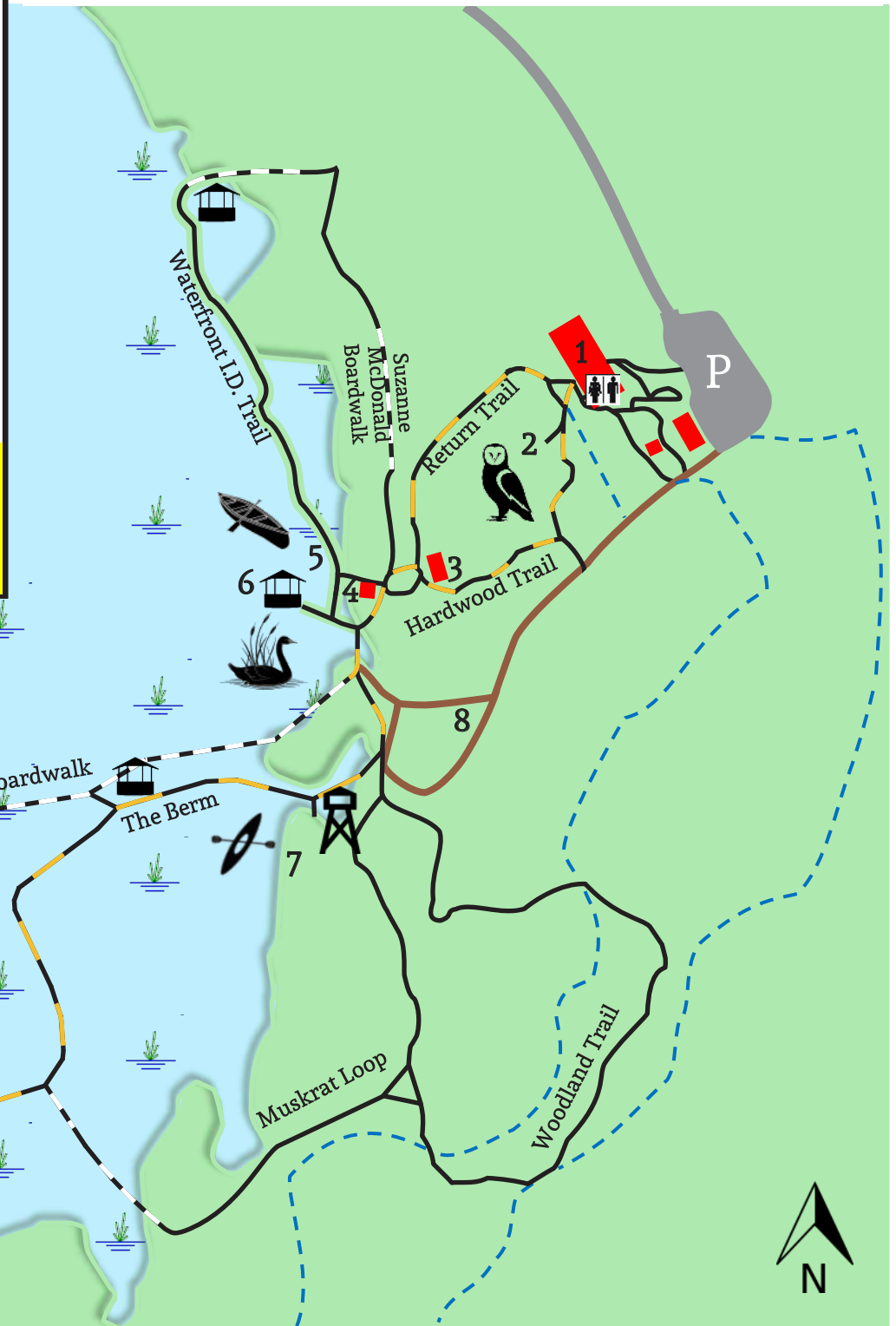
- 1 Visitor's Centre
- 3 Sugar Shack
- 5 Canoe Dock
- 7 Kayak Dock

- 2 Birds of Prey Field
- 4 Log Cabin
- 6 Waterfowl Monitoring Station
- 8 Tenting Field

- Open Land/Forest
- Wetland
- Building

TRAILS CLOSE Nov-April at 4:00 PM
TRAILS CLOSE May-Oct at 4:30 PM

GATES LOCK AT 5:00PM



Please use caution on all trails, walkways, boardwalks, waterways and property of the Wye Marsh. Appropriate hiking footwear is recommended. Slippery conditions exist when wet. Be aware that plant roots and loose rocks can create natural trip hazards when extending above paths. Immediately return to the Visitor's Centre if foul weather occurs.